

1

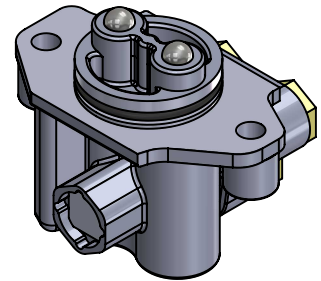
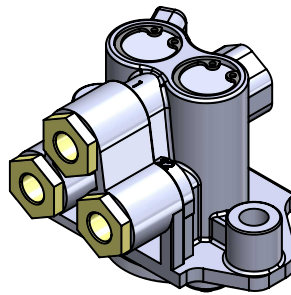
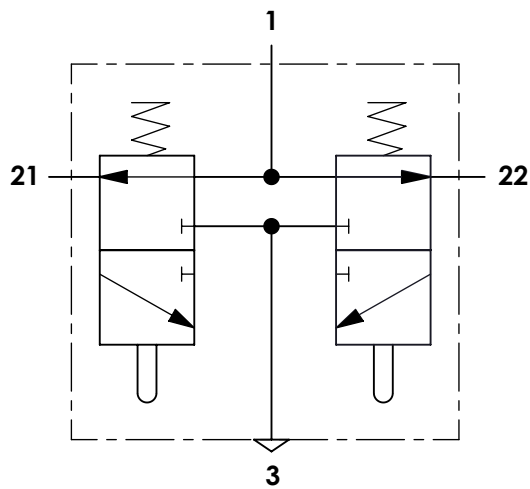
2

3

4

A Technical sheet / Datos técnicos:

Part number adaptable to / Referencia adaptable a	0022606257
Operating pressure / Presión de trabajo	max. 10 bar
Permissible medium / Medio de funcionamiento	Air / Aire
Operating temperature range / Rango de temperatura	-25°C to / a +120°C
Weight / Peso	450 gr



Port / Conexión	Function / Función	Thread / Rosca
1	Supply / Alimentación	M16x1,5 + Adapter/Adaptador VOSS-230 NG8
21	Delivery / Salida	M16x1,5 + Adapter/Adaptador VOSS-230 NG8
22	Delivery / Salida	M16x1,5 + Adapter/Adaptador VOSS-230 NG8
3	Exhaust / Escape	-

E Installation requirements / Requisitos para la instalación:

Mounting is accomplished with two screws M8. / El montaje se realiza mediante dos tornillos M8.

Modification

4

3

2

1

Drawn

19/05/20 R.A.

Checked

19/05/20 O.V.

F

nº

Modified

Date

Reason

General Tolerance

Assembly

-

Comments

-

Part name

Gearbox valve

Material

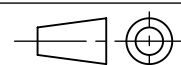
ID. Reference

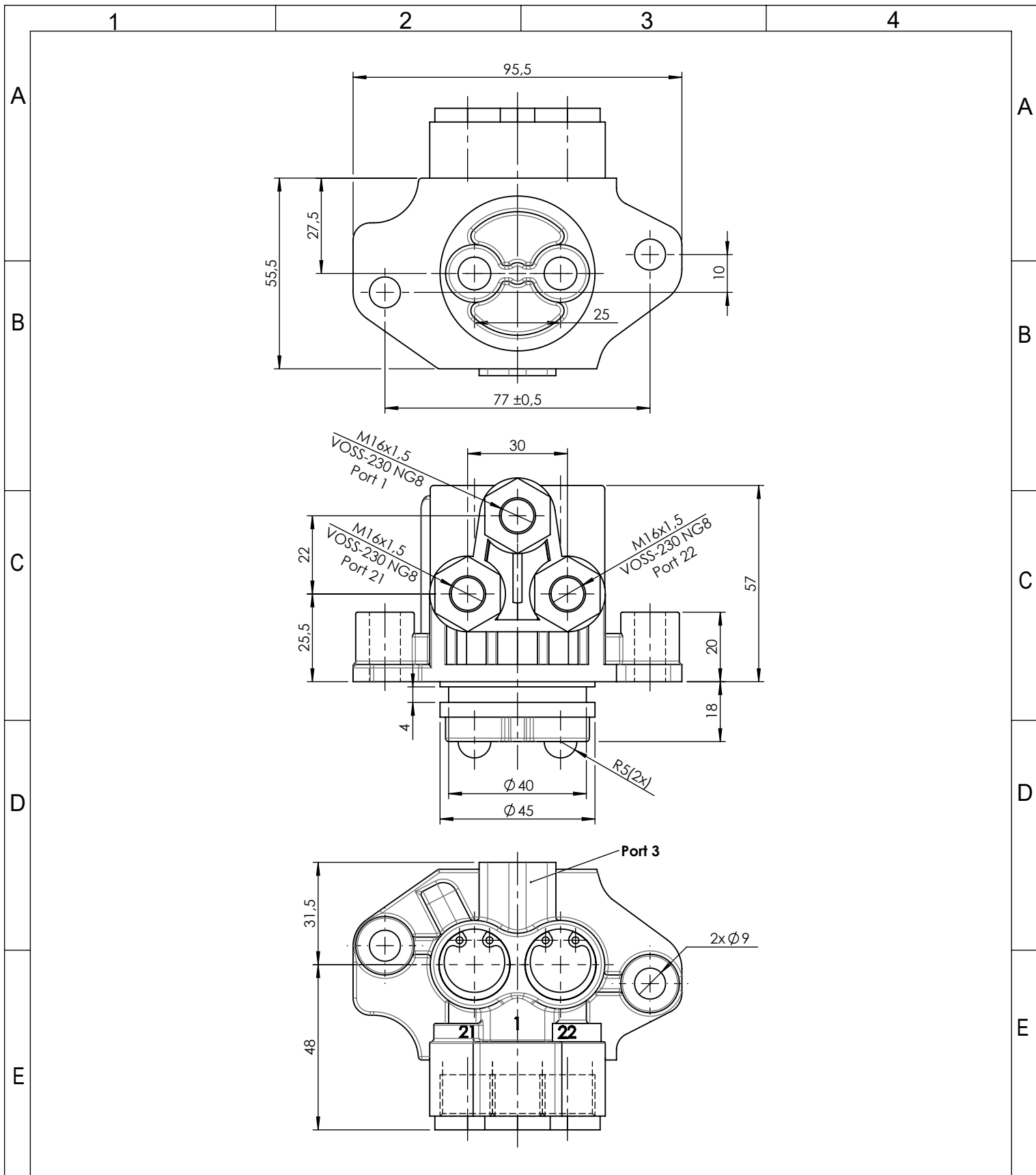
2880197


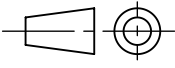
-

Scale: -

Review: 0

Sheet
1/2



F	Modification	4				Drawn		F
		3				19/05/20 R.A.		
		2				Checked		
		1				19/05/20 O.V.		
	n°	Modified	Date	Reason	General Tolerance	Assembly		
Comments					ISO 2768 c-K	Part name	Gearbox valve	
					Material	ID. Reference	2880197	
					-	Scale: 2/3		Sheet 2/2
						Review: 0		
PG/18/02 rev.1 1					2	3	4	