

1

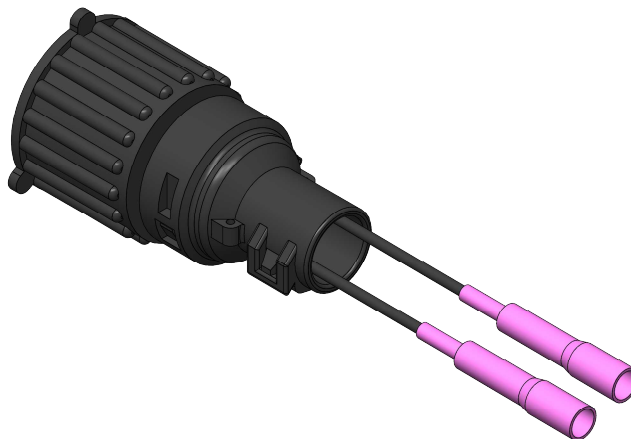
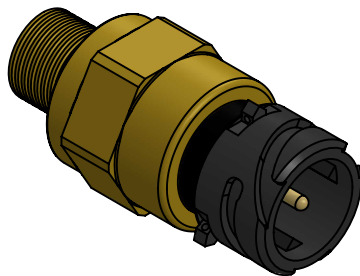
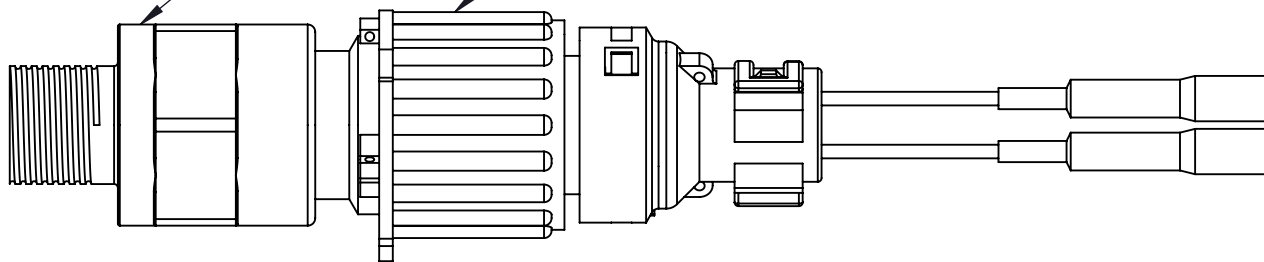
2

3

4

**Technical data/ Datos técnicos:**

According to/ En referencia a:	1087965
Operating temperature range/Rango de temperatura:	-40°C a/to 80°C
Weight/ Peso:	103,5 gr

**1.- Pressure switch/ Conmutador de presión****2.- Sensor connection/ Conexión de sensor**

Modification

4  
3  
2  
1

Drawn

07/07/20 S.F.

Checked

07/07/20 E.L.

F

nº

Modified

Date

Reason

General Tolerance

Assembly

-

Comments

ISO 2768 c-K

Part name

Pressure switch/Sensor de presión

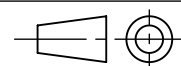
Material

ID. Reference

2260439

Scale: 1/1

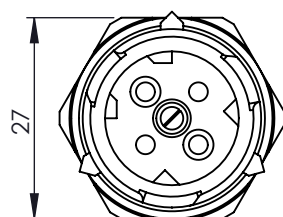
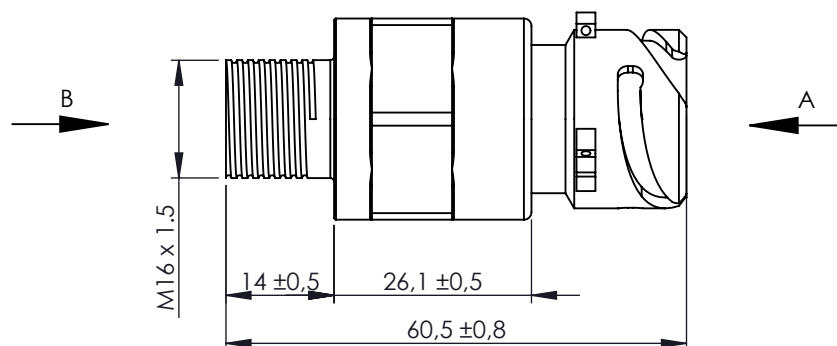
Review: 0

Sheet  
1/3

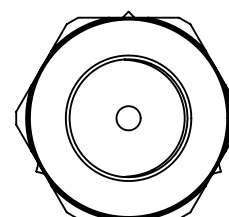
# 1.- Pressure switch/ Conmutador de presión

## Technical data/ Datos técnicos:

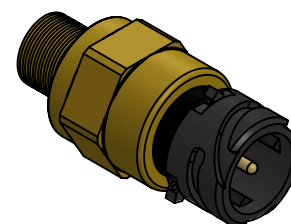
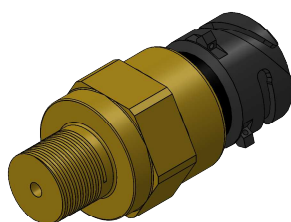
According to/ En referencia a:	20382510
Measuring range/ Campo de medida:	0 - 10 bar
Operating temperature range/Rango de temperatura:	-40°C a/to 80°C
Switching pressure/ Presión de conmutación:	7,5 ± 0,8 bar
Weight/ Peso:	103,5 gr



VIEW/VISTA A



VIEW/ VISTA B



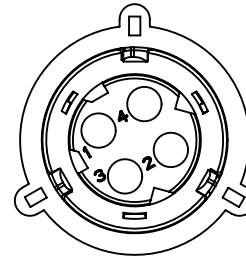
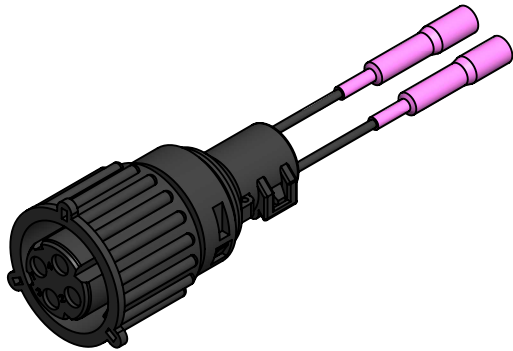
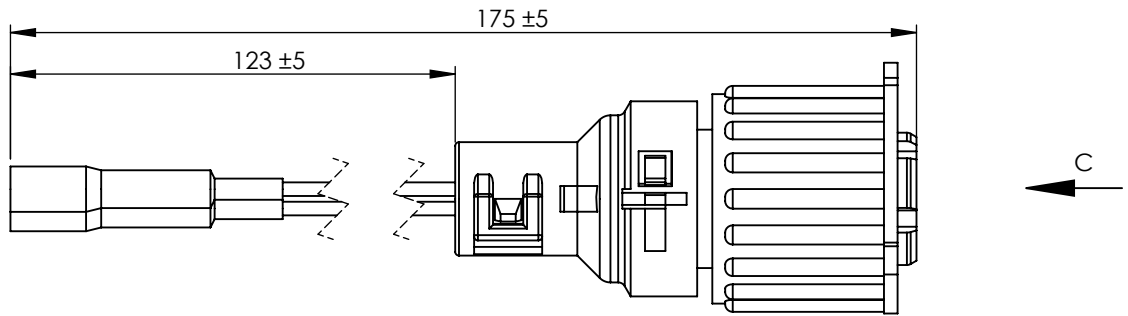
Modification	4				Drawn			
	3				07/07/20 S.F.			
	2				Checked			
	1				07/07/20 E.L.			
	nº	Modified	Date	Reason	General Tolerance	Assembly		
Comments					ISO 2768 c-K	Part name	Pressure switch/Sensor de presión	
					Material	ID. Reference	2260439	
					-	Scale: 1/1		Sheet 2/3
					-	Review: 0		




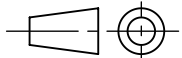
## 2.- Sensor conection/ Conexión de sensor

### Technical data/ Datos técnicos:

According to/ En referencia a:	1741865
Operating temperature range/Rango de temperatura:	-40°C a/to 80°C
Weight/ Peso:	30 gr



VIEW/VISTA C

F	Modification nº	4				Drawn		F
		3				07/07/20 S.F.		
		2				Checked		
		1				07/07/20 E.L.		
		nº	Modified	Date	Reason	General Tolerance		
Comments					ISO 2768 c-K	Part name	Pressure switch/Sensor de presión	
					Material	ID. Reference	2260439	
					-	Scale: 1/1		Sheet 3/3
					-	Review: 0		