

1

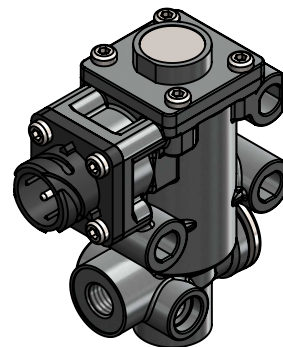
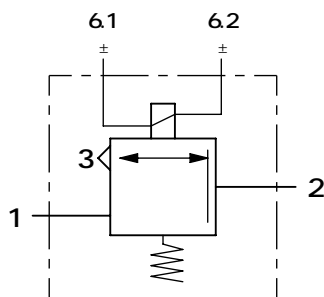
2

3

4

A Technical sheet / Datos técnicos

Operating pressure / Presión de trabajo	max. 12,5 bar
Voltage / Voltaje	24 V
Permissible medium / Medio de funcionamiento	Air / Aire
Weight / Peso	550 gr



Port / Conexión	Function / Función	Thread / Rosca
1	Supply / Alimentación	M12x1,5
2	Delivery / Salida	M12x1,5
3	Exhaust / Escape	-
6	Electric connection / Conexión eléctrica	Bayonet DIN 72585 A1-2

E Purpose / Propósito:

Proportional valve to control the opening of the butterfly valve of EGR system through the control cylinder. / Válvula proporcional para controlar la apertura de la válvula de mariposa del sistema EGR a través del cilindro de mando.

E Installation requirements / Requisitos para la instalación:

Mounting is accomplished with three screws M8. / El montaje se realiza mediante tres tornillos M8.

F	Modification	4				Drawn	
		3				11/11/20 J.S.	
		2				Checked	
		1	J.S.	21/11/24	Modify technical data	11/11/20 O.V.	
		nº	Modified	Date	Reason	General Tolerance	
Comments					-	Part name	Solenoid valve EGR
					Material	ID. Reference	2880230
					-	Scale: -	
					-	Review: 1	

1

2

3

4

A

A

B

B

C

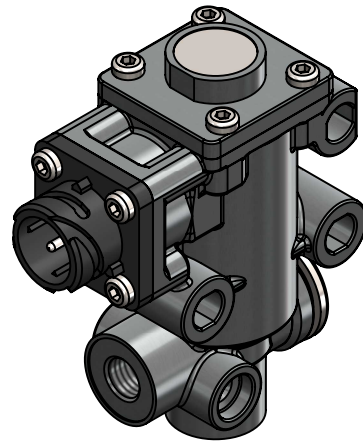
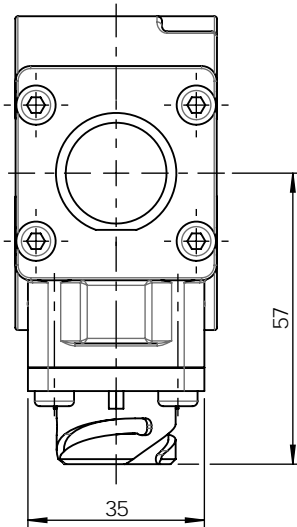
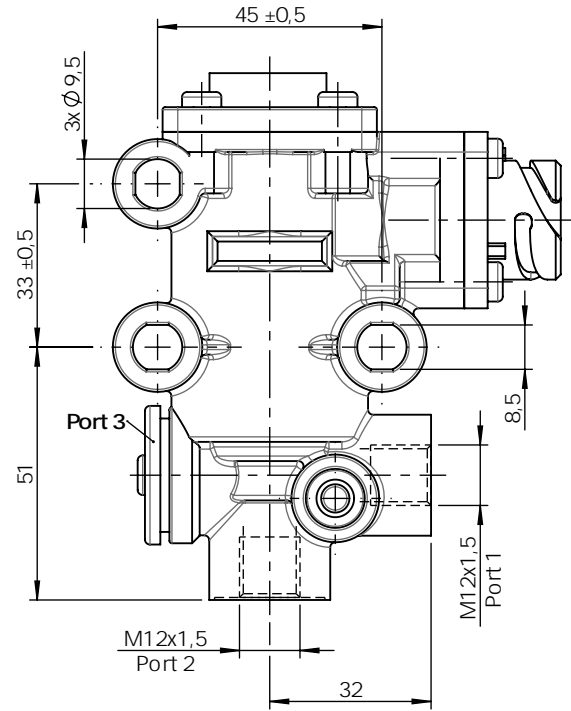
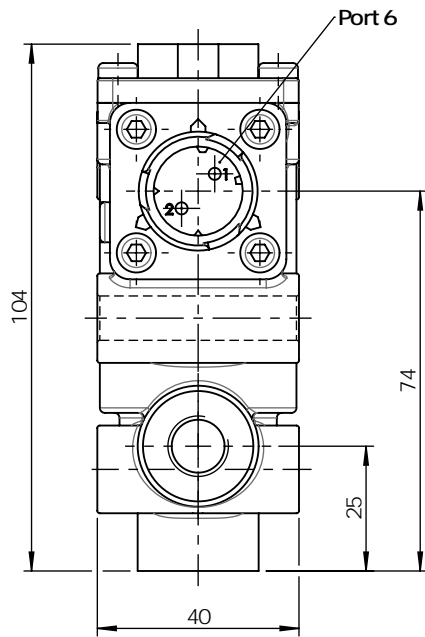
C

D

D

E

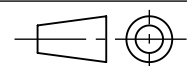
E



F

F

Modification	4				Drawn
	3				11/11/20 J.S.
	2				Checked
	1	J.S.	21/11/24	Modify technical data	11/11/20 O.V.
	n°	Modified	Date	Reason	General Tolerance
Comments					Assembly
					Part name
					ID. Reference
					Scale: 2/3
					Review: 1

Sheet
2/2