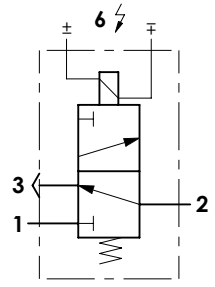

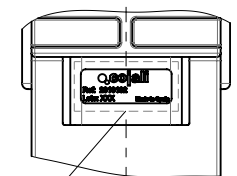
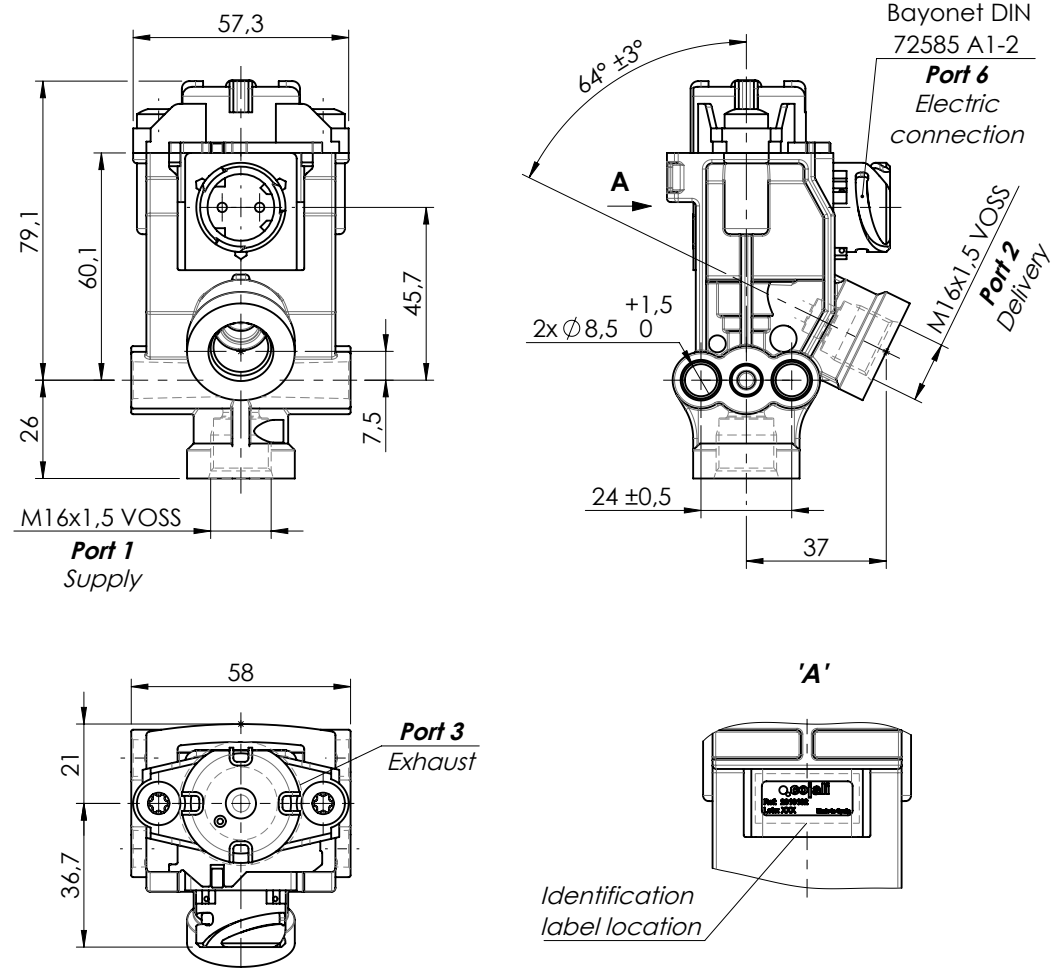
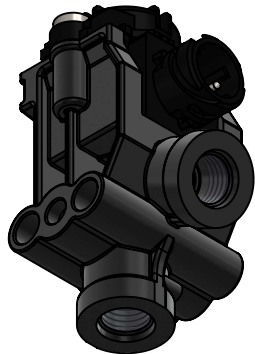

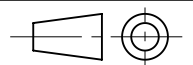


Technical data / Datos técnicos:

Operating pressure / Presión de trabajo	max. 10 bar
Voltage / Voltaje	24 V
Current consumption / Consumo de corriente	max. 150 mA
Permissible medium / Medio de funcionamiento	Air / Aire
Weight / Peso	330 g

<p>Pneumatic scheme / Esquema neumático:</p> 	<p>Identification label / Etiqueta de identificación:</p> <p>Cojali reference</p>  <p>Batch number</p> <p>Country of production</p> <p>Scale / Escala 1 : 1</p>
---	---



Modification	4				Drawn		
	3				04/01/23 J.S.		
	2				Checked		
	1				04/01/23 O.V.		
	nº	Modified	Date	Reason	General Tolerance	Assembly	
Comments					ISO 2768 v-K	Part name	EGR Solenoid valve
					Material	ID. Reference	2318102
						Scale: 1/2	
						Review: 0	