

**Technical data / Datos técnicos:**

|  |               |
|--|---------------|
| Switch pressure / Presión de conmutación     | 4,0 ± 0,4 bar |
| Permissible medium / Medio de funcionamiento | Air / Aire    |
| Weight / Peso                                | 61 g          |

**Identification engraved / Identificación grabada**

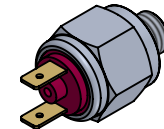
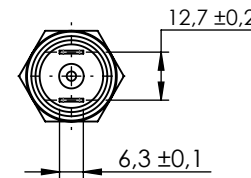
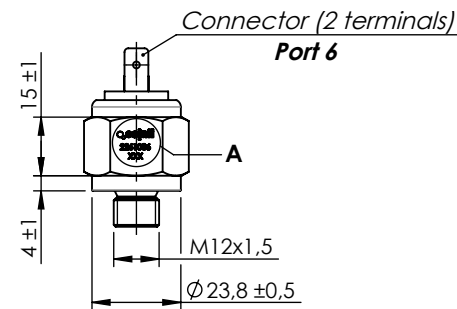
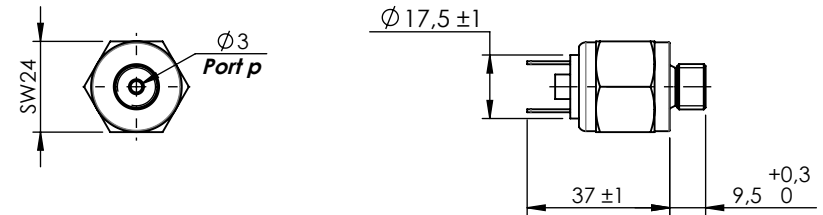
A'

Cojali reference: 2261086  
Batch number: XXX  
Scale 2:1

**Electrical scheme / Esquema eléctrico:**

Normally Open Contact (NOC) /  
Contacto Normalmente Abierto (CNA)

p



|              |             |      |        |                   |               |                 |
|--------------|-------------|------|--------|-------------------|---------------|-----------------|
| Modification | 4           |      |        |                   | Drawn         |                 |
|              | 3           |      |        |                   | 02/07/25 S.S. |                 |
|              | 2           |      |        |                   | Checked       |                 |
|              | 1           |      |        |                   | 02/07/25 O.V. |                 |
|              | nº Modified | Date | Reason | General Tolerance | Assembly      | -               |
| Comments     |             |      |        | ISO 2768 v-K      | Part name     | Pressure switch |
|              |             |      |        | Material          | ID. Reference | 2261086         |
|              |             |      |        |                   | Scale: 1/2    |                 |
|              |             |      |        |                   | Review: 0     |                 |