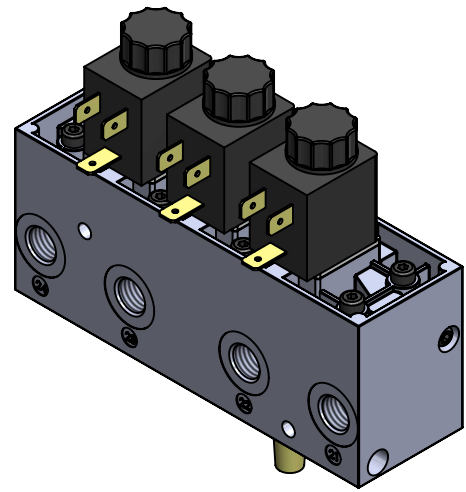
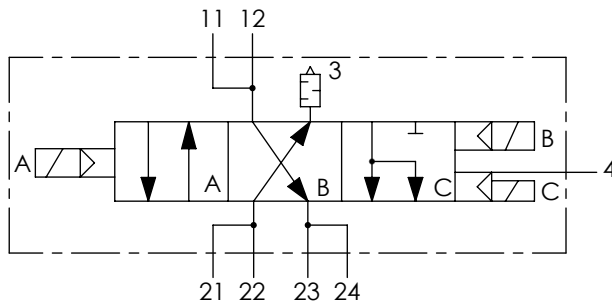


A Technical sheet / Datos técnicos:

Part number adaptable to / Referencia adaptable a:	3720600620
Working pressure / Presión de trabajo:	max. 10 bar
Type of current / Tipo de corriente:	Direct current / Corriente continua
Voltage / Voltaje:	24 V
Nominal current / Corriente nominal:	0.115 A
Permissible medium / Medio de funcionamiento:	Air / Aire
Operating temperature range / Rango de temperatura:	-40 °C to / a +80 °C
Weight / Peso:	1350 gr

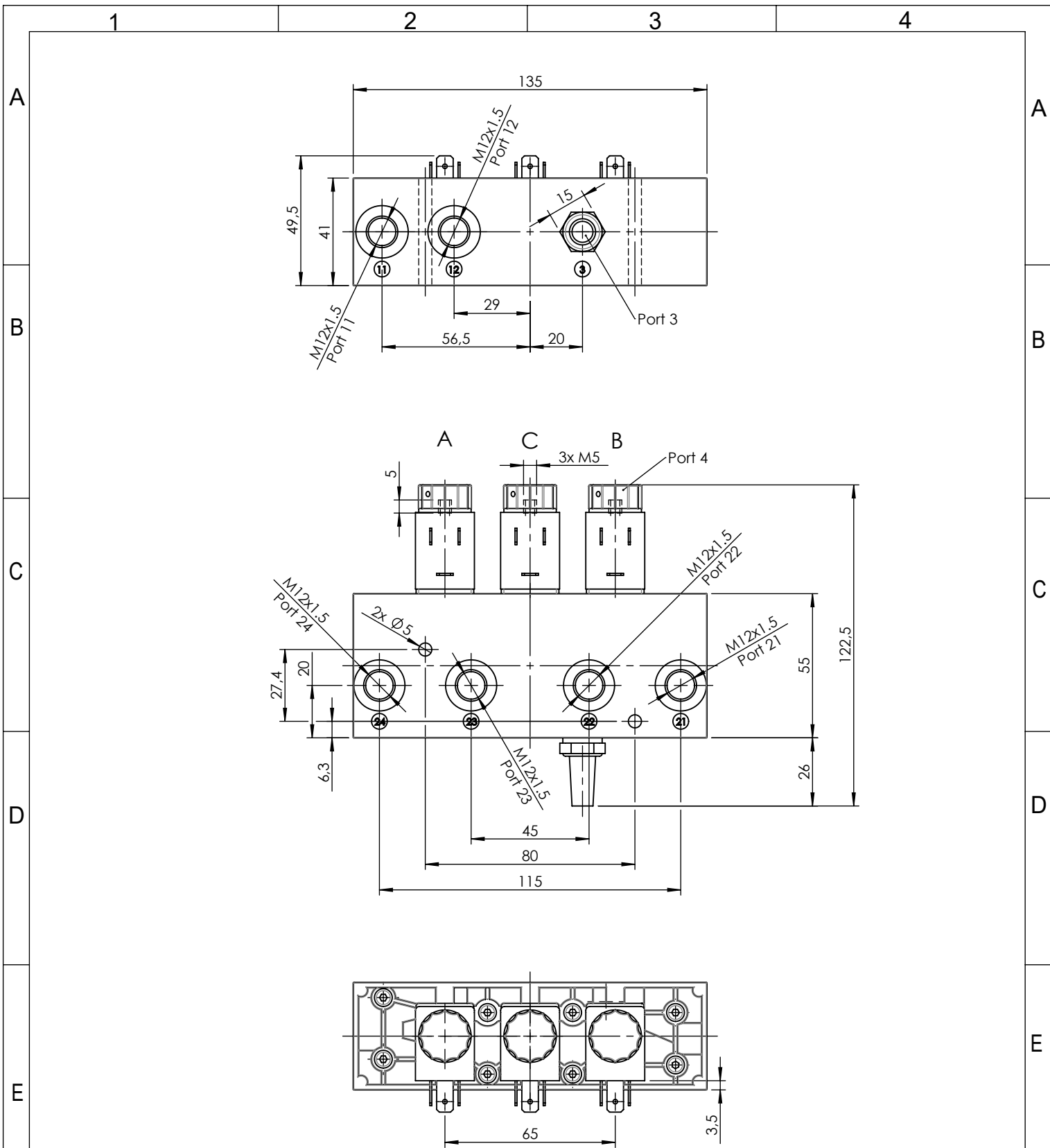



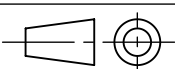
Port / Conexión	Function / Función	Thread / Rosca
11-12	Supply / Alimentación	M12x1.5
21-22-23-24	Delivery / Salida	M12x1.5
3	Exhaust / Escape	-
4	Control / Pilotaje	3x M5

Purpose / Propósito: Allow air flows to delivery port when the solenoid is activated. / Permitir el paso de aire hacia la conexión de salida cuando se activa el solenoide.

Installation requirements / Requisitos para la instalación: The valve must be installed using two screws M5. / La válvula debe ser instalada usando dos tornillos M5.

F	Modification	4				Drawn	
		3				18/06/20 S.F.	
		2				Checked	
		1				18/06/20 O.V.	
		nº	Modified	Date	Reason	General Tolerance	
Comments					-	Part name	Door control solenoid
					Material	ID. Reference	2218104
					-	Scale: -	
					-	Review: 0	



F	Modification	4				Drawn		F
		3				18/06/20 S.F.		
		2				Checked		
		1				18/06/20 O.V.		
	n°	Modified	Date	Reason	General Tolerance	Assembly		
Comments					ISO 2768 c-K	Part name	Door control solenoid	
					Material	ID. Reference	2218104	
					-	Scale: 1/2		Sheet 2/2
					-	Review: 0		