

1

2

3

4

A

Technical sheet / Datos técnicos:

A

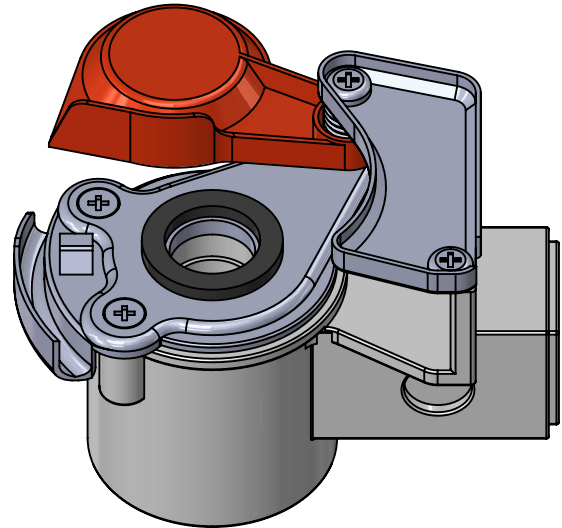
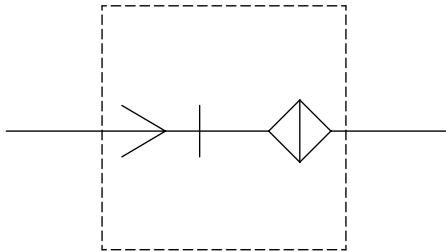
| | |
|--|-----------------------|
| Part number adaptable to / Referencia adaptable a | 9522010040 |
| Supply pressure / Presión de alimetación | max 8,5 bar |
| Test coupling / Conexión de test | No |
| Vehicle / Vehículo | Trailer / Remolque |
| Usage / Aplicación | Supply / Alimentación |
| Integrated filter / Filtro integrado | Yes / Sí |
| Permissible medium / Medio de funcionamiento | Air / Aire |
| Operating temperature range / Rango de temperatura | -40 °C to / a +80 °C |
| Weight / Peso | 260 gr |

B

B

C

C



D

D

| Port / Conexión | Thread / Rosca |
|-----------------|----------------|
| 1 | M16x1.5 |

E

E

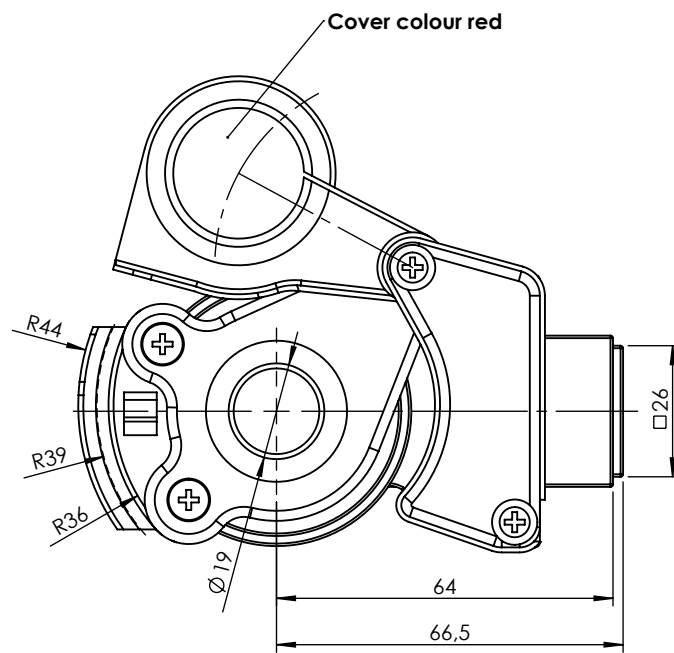
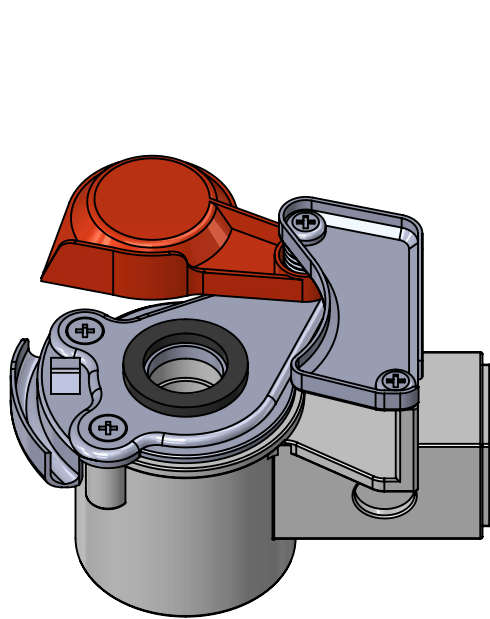
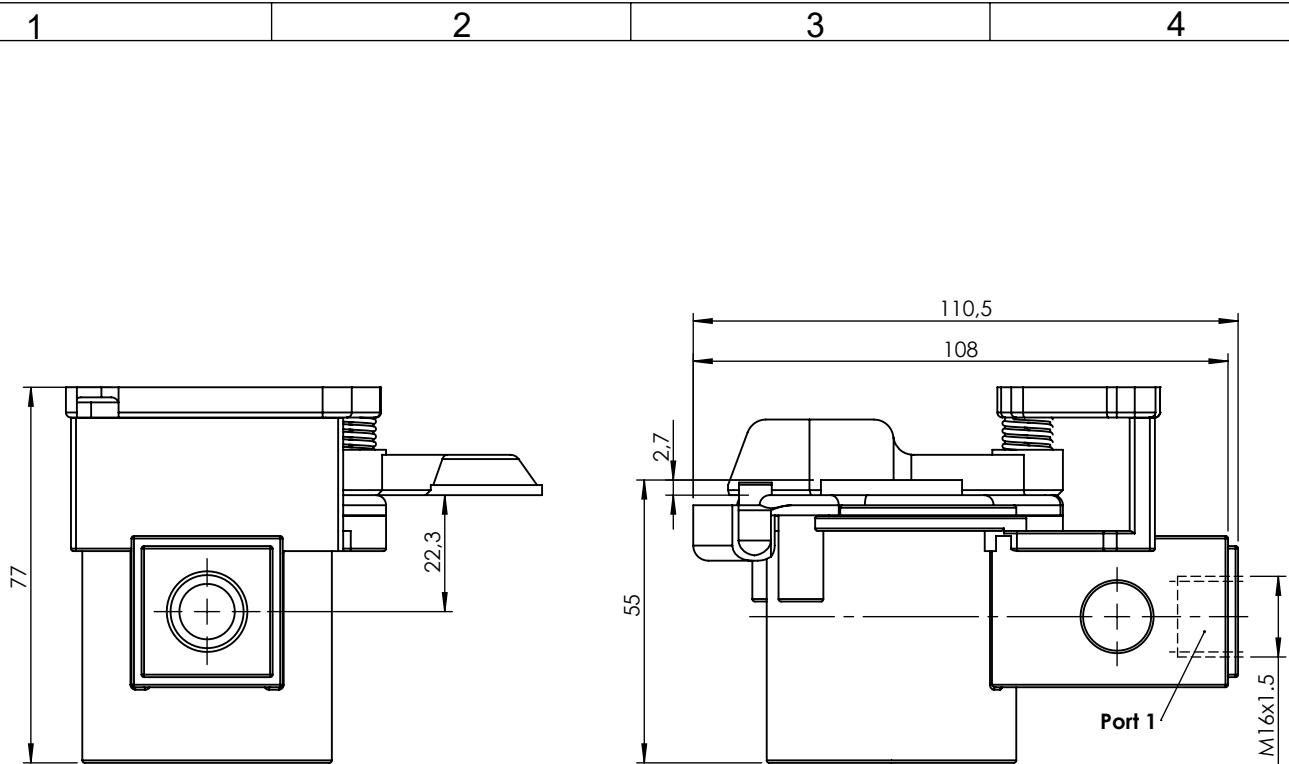
Purpose / Propósito: To connect the pneumatic brake system of the truck or semi-trailer tractor with the trailer's brake system. / Conectar el sistema de frenado neumático del camión o del tractor de semirremolque con el sistema de frenado del remolque.

Installation requirements / Requisitos para la instalación: To fit in accordance with the ISO 1728 standard. / Instalar según la norma ISO 1728.

F

F

| | | | | | | | | |
|--------------|----|----------|------|--------|-------------------|---------------|---------------|-----------|
| Modification | 4 | | | | Drawn | | | |
| | 3 | | | | 18/12/14 A.U. | | | |
| | 2 | | | | Checked | | | |
| | 1 | | | | 18/12/14 A.L. | | | |
| | nº | Modified | Date | Reason | General Tolerance | | Assembly | - |
| Comments | | | | | - | Part name | Coupling head | |
| | | | | | Material | ID. Reference | 6001423 | |
| | | | | | - | Scale: - | | Sheet 1/2 |
| | | | | | - | Review: 0 | | |



| | | | | | | | |
|--------------|----------|----------|------|--------|-------------------|---------------|---------------|
| Modification | 4 | | | | Drawn | | |
| | 3 | | | | 18/12/14 A.U. | | |
| | 2 | | | | Checked | | |
| | 1 | | | | 18/12/14 A.L. | | |
| F | nº | Modified | Date | Reason | General Tolerance | Assembly | |
| | Comments | | | | ISO 2768 c-K | Part name | Coupling head |
| | | | | | Material | ID. Reference | 6001423 |
| | | | | | - | Scale: 2/3 | |
| | | | | | Review: 0 | Sheet 2/2 | |