

1

2

3

4

A

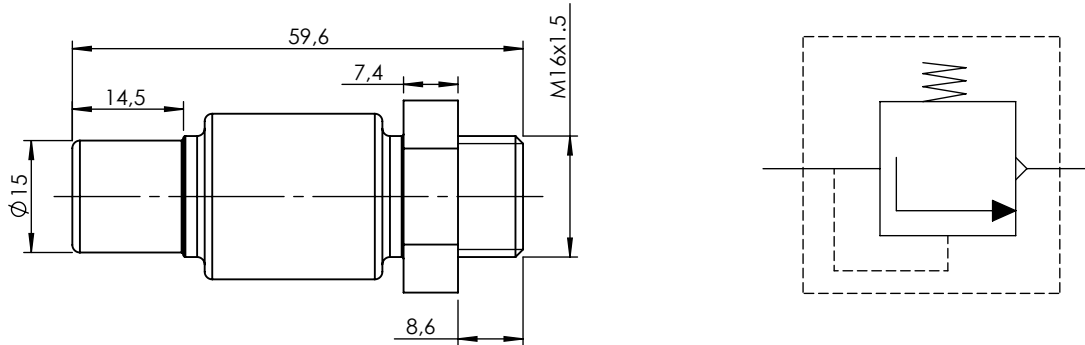
Technical sheet / Datos técnicos:

A

Part number adaptable to / Referencia adaptable a	4346082200
Opening pressure / Presión de apertura	10 +1 bar
Permissible medium / Medio de funcionamiento	Air / Aire
Operating temperature range / Rango de temperatura	-40 °C to / a +80 °C
Weight / Peso	81 gr

B

B

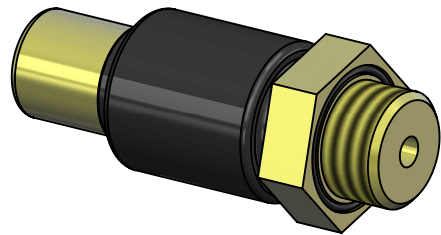
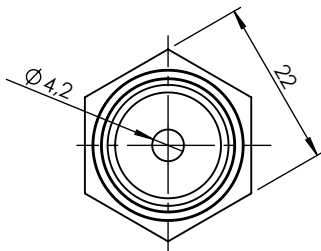


C

C

D

D



Port / Conexión	Function / Función	Thread / Rosca
1	Supply / Alimentación	M16x1.5

Purpose / Propósito: To limit the pressure inside a compressed air system to a maximum admissible value. / Limitar la presión dentro de un sistema de aire comprimido a un valor máximo admisible.

Installation requirements / Requisitos para la instalación: The valve must be installed using the thread M16x1.5. / La válvula debe ser instalada utilizando la rosca M16x1.5.

E

E

F

F

Modification	4				Drawn			
	3				10/12/19 R.A.			
	2				Checked			
	1				10/12/19 O.V.			
	nº	Modified	Date	Reason	General Tolerance		Assembly	-
Comments					ISO 2768 c-K	Part name	Safety valve	
					Material	ID. Reference	2280107	
					-	Scale: 1/1		Sheet 1/2
					-	Review: 0		