

1

2

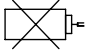
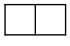


3

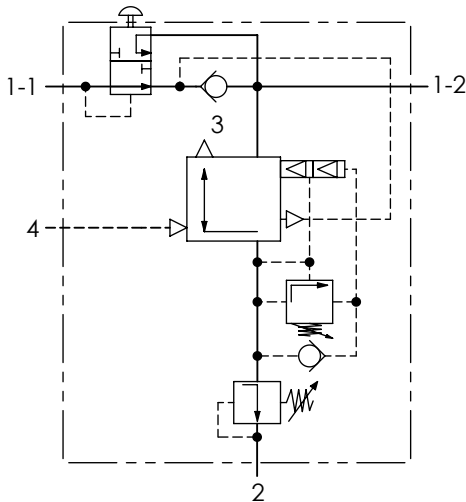
4

Technical sheet / Datos técnicos:

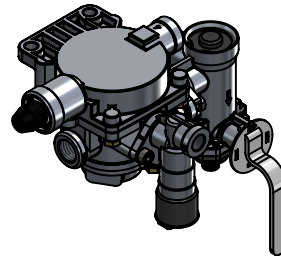
| | |
|--|----------------------|
| Part number adaptable to / Referencia adaptable a | 9710026200 |
| Operating pressure / Presión de trabajo | max. 10 bar |
| Predominance / Predominancia | max. 1 bar |
| Permissible medium / Medio de funcionamiento | Air / Aire |
| Operating temperature range / Rango de temperatura | -40 °C to / a +80 °C |
| Weight / Peso | 2400 gr |

Pressure regulation / Regulación de presión

| Symbol / Símbolo | Description / Descripción | Range of adjustment / Rango de ajuste (bar) | Adjusted to / Ajustado a (bar) |
|---|--|---|--------------------------------|
|  | Release position / Posición de reposo | | |
|  | Empty position / Posición vacío | 1.4 ... 2.8 | 2.0 (-0.2) |
|  | Half load position / Posición media carga | 3.4 ... 4.3 | 3.9 (-0.2) |
|  | Full load position / Posición carga completa | | |


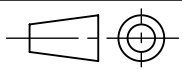


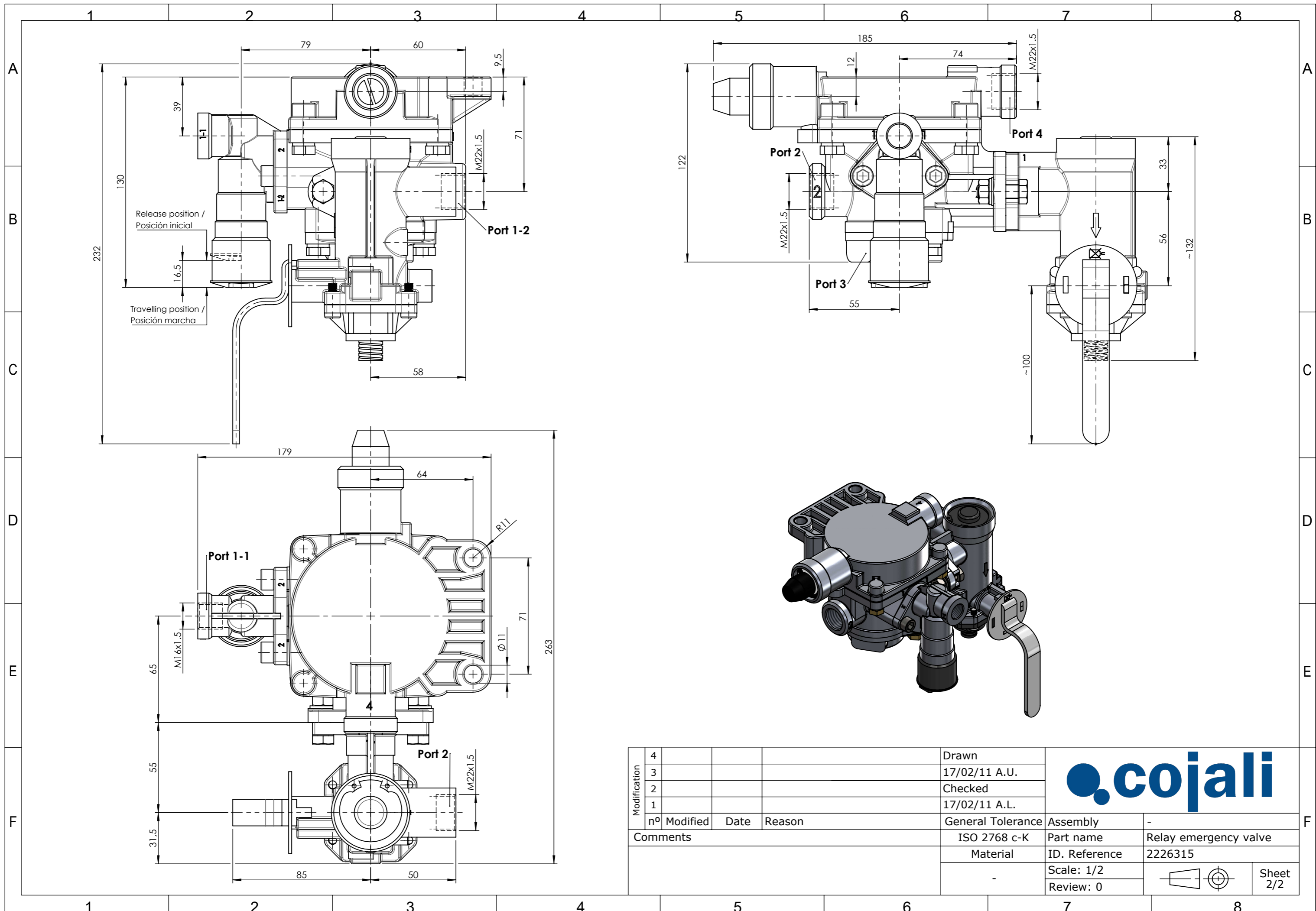
| Port / Conexión | Function / Función | Thread / Rosca |
|-----------------|--|----------------|
| 1-1 | Supply / Alimentación | M16x1.5 |
| 1-2 | Reservoir supply / Suministro del depósito | M22x1.5 |
| 2 | Delivery / Salida | 2x M22x1.5 |
| 3 | Exhaust / Escape | - |
| 4 | Control / Pilotaje | M22x1.5 |




Purpose / Propósito: Control of two-lines air braking system of trailer when the braking system of the towing vehicle is actuating. Triggering of the automatic semitrailer braking with partial or total pressure drop in the supply line. / Control de la línea doble de freno del trailer cuando actúa el sistema de freno del vehículo tractor. Activación del freno automático del semitrailer con total o parcial caída de presión en la línea de alimentación.

Installation requirements / Requisitos para la instalación: Install the trailer brake valve vertically with the exhaust pointing downward. Fasten the trailer brake valve with two M10 bolts. / Instalar la válvula de freno de trailer verticalmente con el escape apuntando hacia abajo. Fijar la válvula de freno de trailer con dos tornillos M10.

| Modification | | | | Drawn | |  | |
|--------------|----|----------|------|----------|-------------------|---|-----------|
| | nº | Modified | Date | Reason | General Tolerance | | |
| 4 | | | | | Assembly | | - |
| 3 | | | | | 17/02/11 A.U. | | |
| 2 | | | | | Checked | | |
| 1 | | | | | 17/02/11 A.L. | | |
| Comments | | | | - | Part name | Relay emergency valve | |
| | | | | Material | ID. Reference | 2226315 | |
| | | | | - | Scale: - |  | |
| | | | | - | Review: 0 | | Sheet 1/2 |



| | | | | | |
|--------------|-------------|------|--------|---|-----------------------|
| Modification | 4 | | | Drawn | |
| | 3 | | | 17/02/11 A.U. | |
| | 2 | | | Checked | |
| | 1 | | | 17/02/11 A.L. | |
| | nº Modified | Date | Reason | General Tolerance | Assembly |
| Comments | | | | ISO 2768 c-K | - |
| | | | | Material | Part name |
| | | | | | Relay emergency valve |
| | | | | | ID. Reference |
| | | | | | 2226315 |
| | | | | | Scale: 1/2 |
| | | | | | Review: 0 |
| | | | |  | |
| | | | | Sheet 2/2 | |

