

1

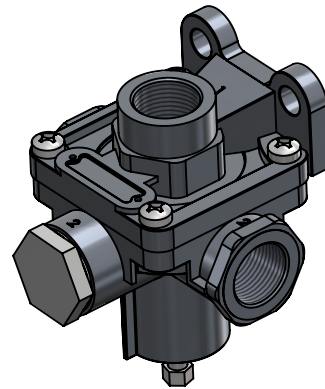
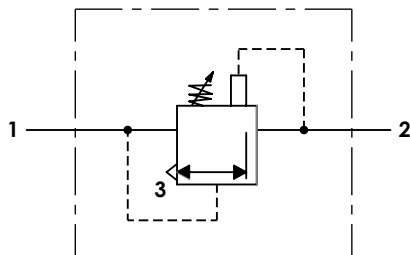
2

3

4

A Technical sheet / Datos técnicos:

Operating pressure / Presión de trabajo	max. 10 bar
Setting value / Valor de ajuste	0.5 bar
Break point / Presión de interrupción	2 bar
Permissible medium / Medio de funcionamiento	Air / Aire
Weight / Peso	600 gr



Port / Conexión	Function / Función	Thread / Rosca
1	Supply / Alimentación	M22x1.5
2	Delivery / Salida	2x M22x1.5
3	Exhaust / Escape	-

Purpose / Propósito: To reduce the breaking force of adjusting axles during partial braking actions and to quickly vent the brake cylinder. / Reducir la fuerza de frenado de los ejes delanteros durante las acciones de frenado parcial y ventilar rápidamente el cilindro del freno.

Installation requirements / Requisitos para la instalación: The adaptor valve is fastened using two screws M8. To install the valve half way between the two brake cylinders of the axle to be adapted and the exhaust port facing downwards. / La válvula compensadora es fijada usando dos tornillos M8. Instalar la válvula a medio camino entre los dos cilindros de freno del eje a ser adaptado y con el escape hacia abajo.

Modification	4				Drawn		
	3				12/08/15 A.U.		
	2				Checked		
	1				12/08/15 A.L.		
	nº	Modified	Date	Reason	General Tolerance		Assembly
Comments					-	Part name	Adaptor valve
					Material	ID. Reference	2429000
					-	Scale: -	
					-	Review: 0	

1

2

3

4

A

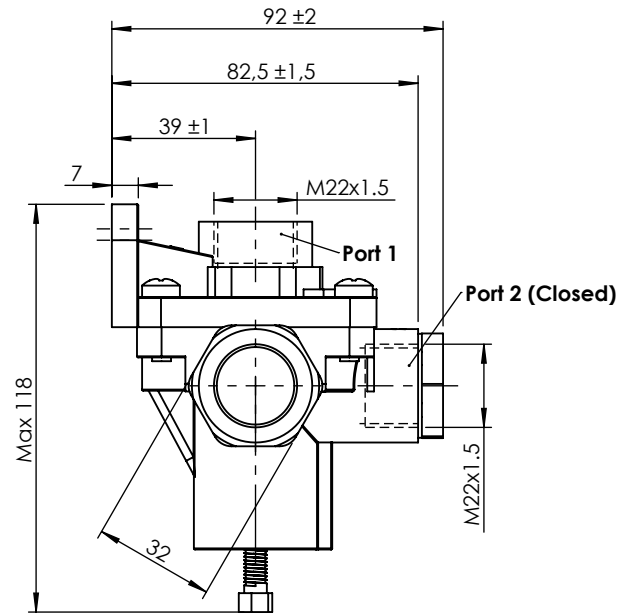
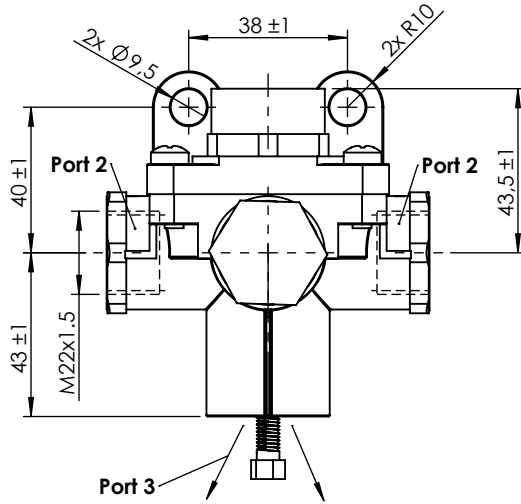
A

B

B

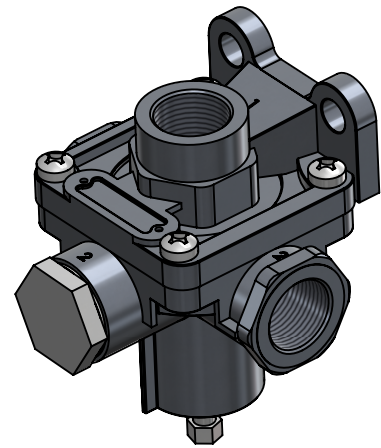
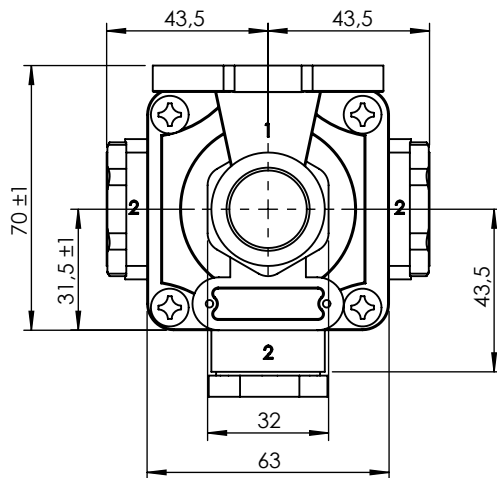
C

C




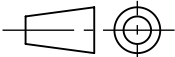
D

D



E

E

F	Modification	4				Drawn		F
		3				12/08/15 A.U.		
		2				Checked		
		1				12/08/15 A.L.		
	nº	Modified	Date	Reason	General Tolerance	Assembly	-	
Comments					ISO 2768 c-K	Part name	Adaptor valve	
					Material	ID. Reference	2429000	
					-	Scale: 1/2		Sheet 2/2
					-	Review: 0		